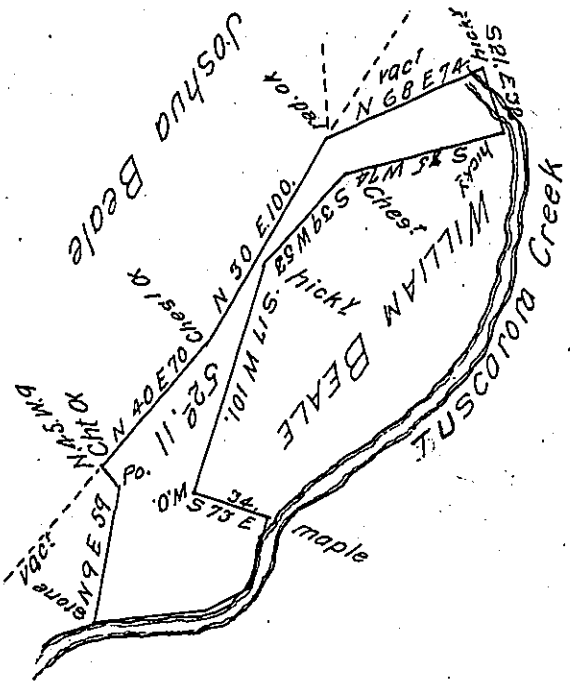


Courses & distances
from maple corner
up creek to stone cor-
ner on line

Henry Nevell

Maple

S 16 W 32
S 57 W 20
N 84 W 50 Stone
total 102



Draught of fifty two acres and eleven perches of land with 6 Per Cent
for roads situate in Lack township in Mifflin county surveyed on the 3^d
day of June 1808 in pursuance of a warrant granted to Abner Beale
dated 24th day of March 1789.

James Harris D.S.

Samuel Cochran Esquire }
Surveyor General of }
Pennsylvania }

IN TESTIMONY that the above is a copy of the original remaining on file in
the Department of Internal Affairs of Pennsylvania, made
conformably to an Act of Assembly approved the 16th day of
February, 1833, I have hereunto set my Hand and caused
the Seal of said Department to be affixed at Harrisburg,
this fourteenth day of March 1904

Isaac R. Brown
Secretary of Internal Affairs.